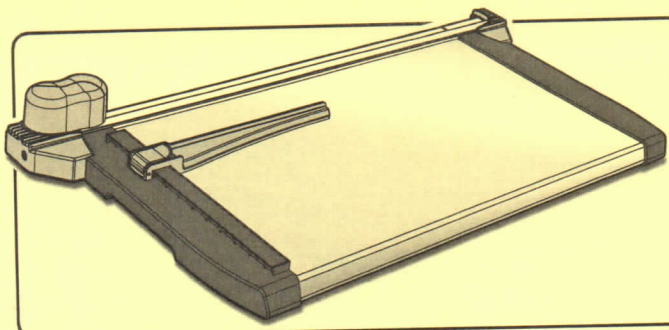


4WD rotary trimmer

SAFE • EASY • PRECISE



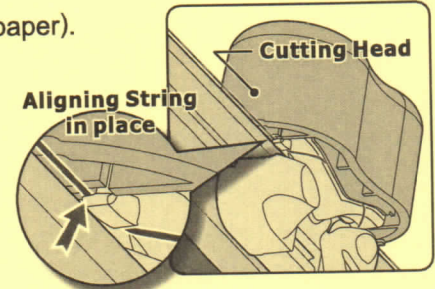
BEFORE USING THIS PRODUCT, please take a few moments reading through this guide for an overall understanding about safety information and important operation instructions. Save this guide for future reference.

SAFETY INFORMATION

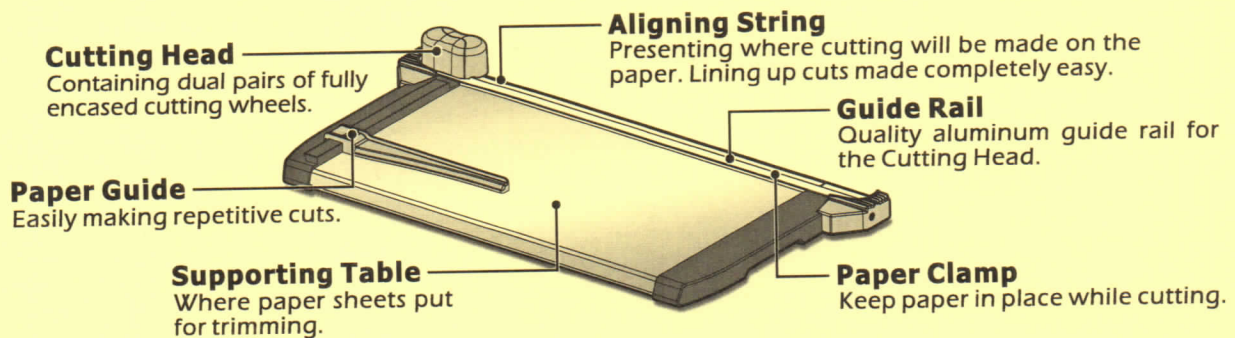
- Observe all warnings and instructions marked on the product.
- Use this product on a stable, flat and nonslippery surface to prevent from overturning in operation.
- Keep loose items such as jewelry, neckties, clothing, etc. away while using the product to avoid personal injury or damage to the product.
- Do not hang or wall-mount the product.
- Do not carry the product by the **Cutting Head**.
- For indoor use only.

IMPORTANT

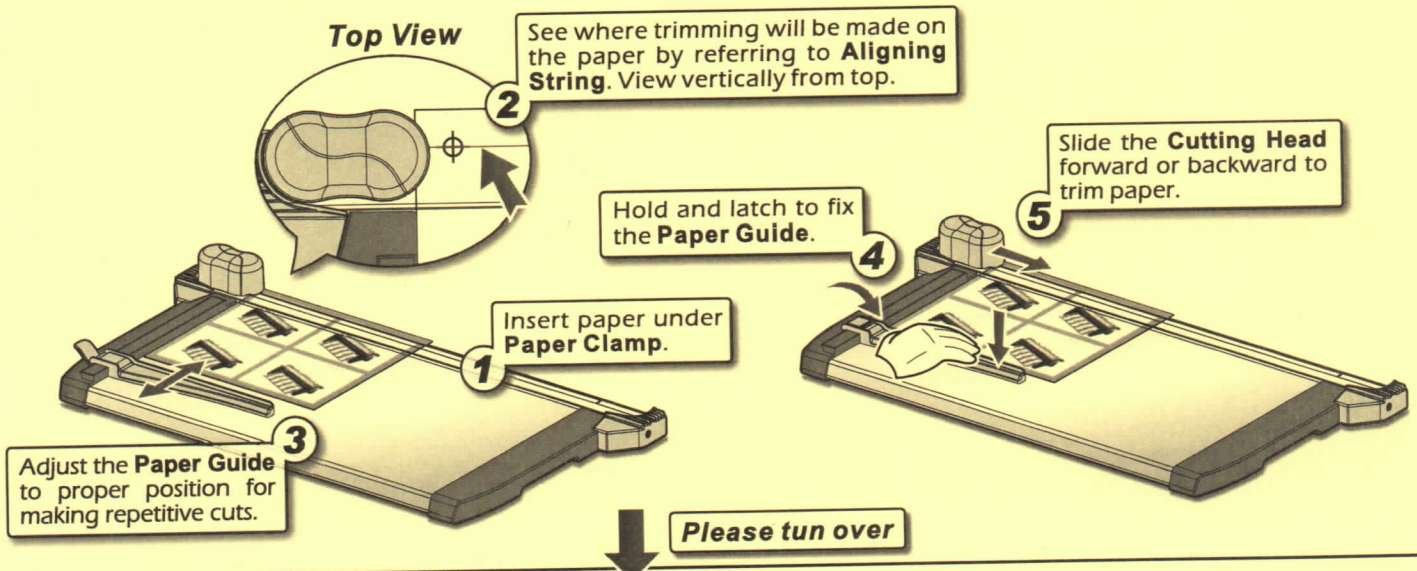
- Trimming paper sheets to a maximum of **0.8 mm** height (**8 sheets of 70 gsm** paper).
- Remove paper clips and staples before trimming paper.
- Do not expose product to water or other liquids.
- Never use the **Supporting Table** as a cutting mate. Keep sharp items away to protect the printing on the table as well as the **Aligning String**.
- **Aligning String** should be in place so as to present the cutting line correctly.
(See picture to the right)



COMPONENTS DESCRIPTION

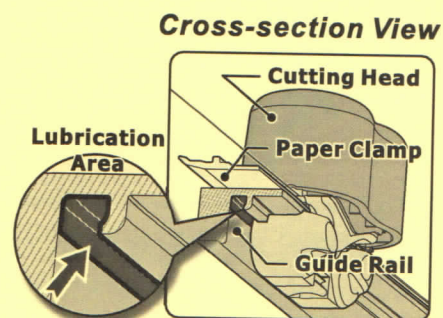


USE THE TRIMMER



MAINTAIN YOUR TRIMMER

- Use a soft cloth to wipe dust and smudges off the case or table. Do not use abrasive cleaners and keep fluids away.
- Encased rotary blades will perform self-sharpening in operation. Lubrication on the blades or **Paper Clamp** is NOT required.
- Lubrication on the **Guide Rail** helps make the **Cutting Head** of your trimmer move freely along the **Guide Rail**. Over time paper dust and dirt can result in increased friction, and lubrication will reduce friction and offer you smooth movements. See picture to the right for where lubrication can be applied on the **Guide Rail**.
- For convenience, lubricant such as Vaseline® can be used on the **Guide Rail**.



NOTE